

UNIT
6
8,563 ft²



CHESSINGTON, SURREY, KT9 2NY
BARWELLBUSINESSPARK.CO.UK

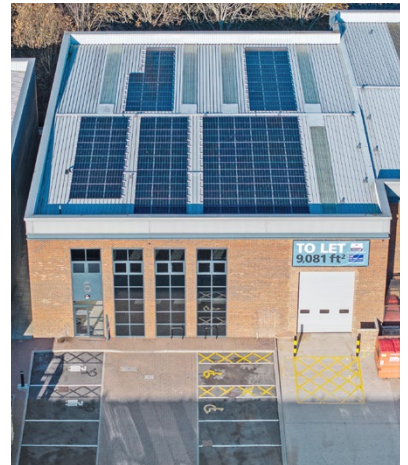
UNIT
6



8,563 ft²

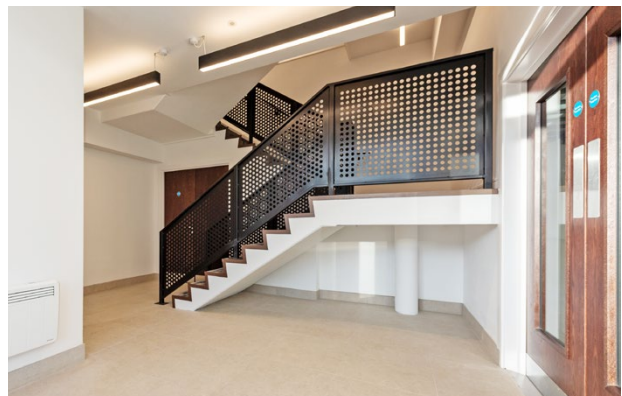
**INDUSTRIAL / WAREHOUSE UNIT
TO LET**

FULLY REFURBISHED



UNIT 6

	FT ²	M ²
Warehouse	7,197	669
Ground Floor Office	355	33
First Floor Office	1,011	94
TOTAL (GIA)	8,563	796



SPECIFICATION



**HIGH QUALITY
REFURBISHMENT**



**EPC RATING
A**



**EV CHARGING
POINTS**



**LED LIGHTING
THROUGHOUT**



**EXCELLENT
CAR PARKING**



**LARGE SERVICE
YARD**



**5m x 4m ROLLER
SHUTTER DOOR**



**EAVES HEIGHT
8.0m**



**3 PHASE
POWER**



**NEW FULLY-FITTED
FIRST FLOOR OFFICES**



**NEW GROUND &
FIRST WC FACILITIES**



KITCHENETTE



**24 HOUR
MANNED SECURITY**



**ON-SITE CCTV
& ANPR**



**TAKE THE
360° TOUR**

WELL CONNECTED

An established industrial, trade and business park strategically located on the A243 Leatherhead Road.

The Park is home to over 60 businesses, covering 400,000 ft², servicing the Industrial, Manufacturing, Trade Counter and Final Mile Logistic sectors.



LONDON WATERLOO
(38 minutes) every 30 mins
from Chessington South



REGULAR BUS SERVICES
to Kingston-upon-Thames
– Routes 71 and 465

DRIVE-TIMES

A3 at Hook	1.6 miles	6 mins
J9 M25	2.8 miles	10 mins
Heathrow Airport	11.6 miles	40 mins
Gatwick Airport	22.3 miles	40 mins
Central London	16.0 miles	55 mins



what3words.com
/// lines.soap.field



SAT NAV
KT9 2NY



BARWELL BUSINESS PARK OCCUPIERS



TERMS

Details of terms, service charge and rates available on request.

SHW SHW.CO.UK
020 8662 2700

Robert Bradley-Smith
rbradley-smith@shw.co.uk
07469 854 799

Colliers
020 7935 4499
colliers.com/uk/industrial

James Haestier
james.haestier@colliers.com
07818 038 009

CHESSINGTON, SURREY, KT9 2NY
BARWELLBUSINESSPARK.CO.UK