

UNIT  
**6**  
8,563 ft<sup>2</sup>



CHESSINGTON, SURREY, KT9 2NY  
[BARWELLBUSINESSPARK.CO.UK](http://BARWELLBUSINESSPARK.CO.UK)

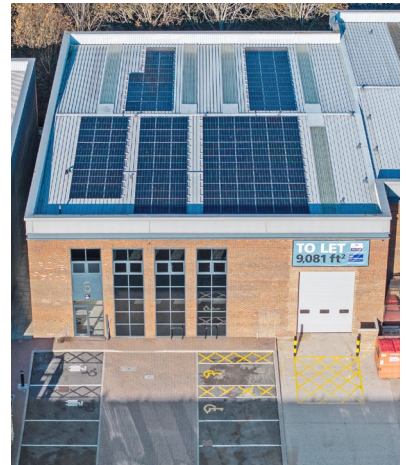
UNIT  
**6**



**8,563 ft<sup>2</sup>**

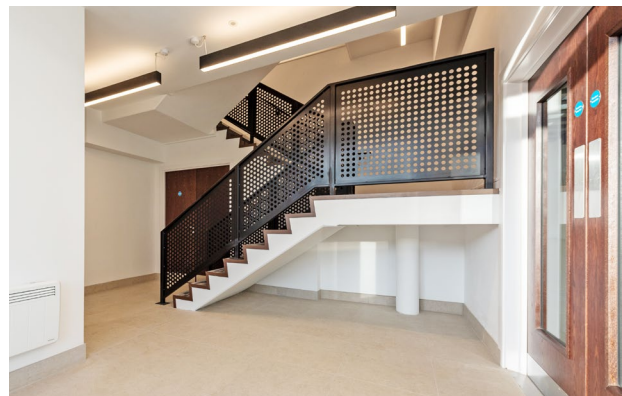
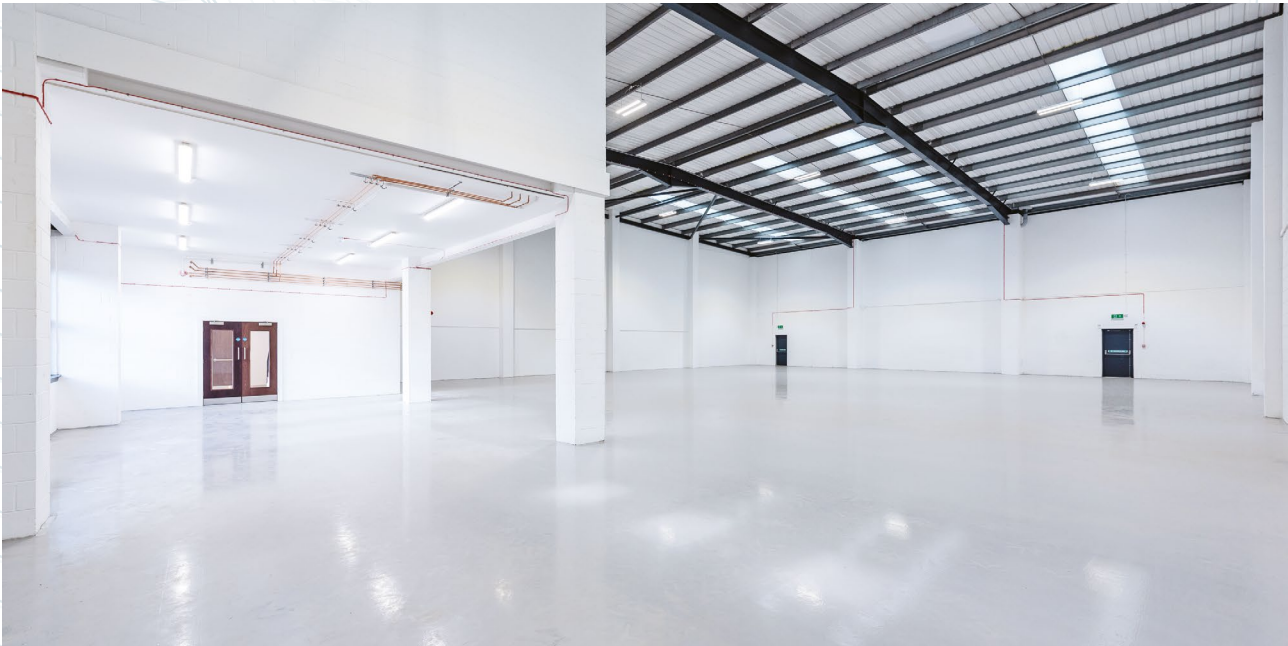
**INDUSTRIAL / WAREHOUSE UNIT  
TO LET**

**FULLY REFURBISHED**



# UNIT 6

	FT <sup>2</sup>	M <sup>2</sup>
Warehouse	7,197	669
Ground Floor Office	355	33
First Floor Office	1,011	94
<b>TOTAL (GIA)</b>	<b>8,563</b>	<b>796</b>



# SPECIFICATION



**HIGH QUALITY  
REFURBISHMENT**



**EPC RATING  
A**



**EV CHARGING  
POINTS**



**LED LIGHTING  
THROUGHOUT**



**EXCELLENT  
CAR PARKING**



**LARGE SERVICE  
YARD**



**5m x 4m ROLLER  
SHUTTER DOOR**



**EAVES HEIGHT  
8.0m**



**3 PHASE  
POWER**



**NEW FULLY-FITTED  
FIRST FLOOR OFFICES**



**NEW GROUND &  
FIRST WC FACILITIES**



**KITCHENETTE**



**CENTRAL LONDON**  
17 MILES

**A3**

**A3**

**CHESSINGTON**

**M25**  
JUNCTION 10  
8 MILES

**A243**

**UNIT 6**



**LONDON WATERLOO**  
(38 minutes) every  
30 mins from  
Chessington South

**CHESSINGTON SOUTH**  
- 2 MINUTE WALK



**M25**  
JUNCTION 9  
2.8 MILES



Access to  
Chessington  
South Station

Chessington,  
A3 & London

Exit

LEATHERHEAD ROAD A243

Main Entrance

Security &  
Estate Office

M25 Junction 9  
(2.8 miles)



**24 HOUR  
MANNED SECURITY**



**ON-SITE CCTV  
& ANPR**



**TAKE THE  
360° TOUR**

## WELL CONNECTED

An established industrial, trade and business park strategically located on the A243 Leatherhead Road.

The Park is home to over 60 businesses, covering 400,000 ft<sup>2</sup>, servicing the Industrial, Manufacturing, Trade Counter and Final Mile Logistic sectors.



**LONDON WATERLOO**  
(38 minutes) every 30 mins  
from Chessington South



**REGULAR BUS SERVICES**  
to Kingston-upon-Thames  
– Routes 71 and 465

### DRIVE-TIMES

A3 at Hook	1.6 miles	6 mins
J9 M25	2.8 miles	10 mins
Heathrow Airport	11.6 miles	40 mins
Gatwick Airport	22.3 miles	40 mins
Central London	16.0 miles	55 mins



what3words.com  
/// lines.soap.field



SAT NAV  
KT9 2NY



## BARWELL BUSINESS PARK OCCUPIERS



### TERMS

Details of terms, service charge and rates available on request.

  
**020 7935 4499**  
[colliers.com/uk/industrial](https://colliers.com/uk/industrial)

**James Haestier**  
[james.haestier@colliers.com](mailto:james.haestier@colliers.com)  
07818 038 009

**YC Lau**  
[yc.lau@colliers.com](mailto:yc.lau@colliers.com)  
07551 383 904

  
**020 8662 2700**

**Robert Bradley-Smith**  
[rbradley-smith@shw.co.uk](mailto:rbradley-smith@shw.co.uk)  
07469 854 799

**Tom Batey**  
[tbatey@shw.co.uk](mailto:tbatey@shw.co.uk)  
07947 373 868

  
**0203 151 1011**  
[www.tlre.co.uk](https://www.tlre.co.uk)

**Ed Thomason**  
[et@tlre.co.uk](mailto:et@tlre.co.uk)  
07818 065 276

**Paul Londra**  
[pl@tlre.co.uk](mailto:pl@tlre.co.uk)  
07779 269 290

C H E S S I N G T O N , S U R R E Y , K T 9 2 N Y  
**BARWELLBUSINESSPARK.CO.UK**